



# Social Return on Investment

## Al Aman Fund For The Future of Orphans

### Study Community



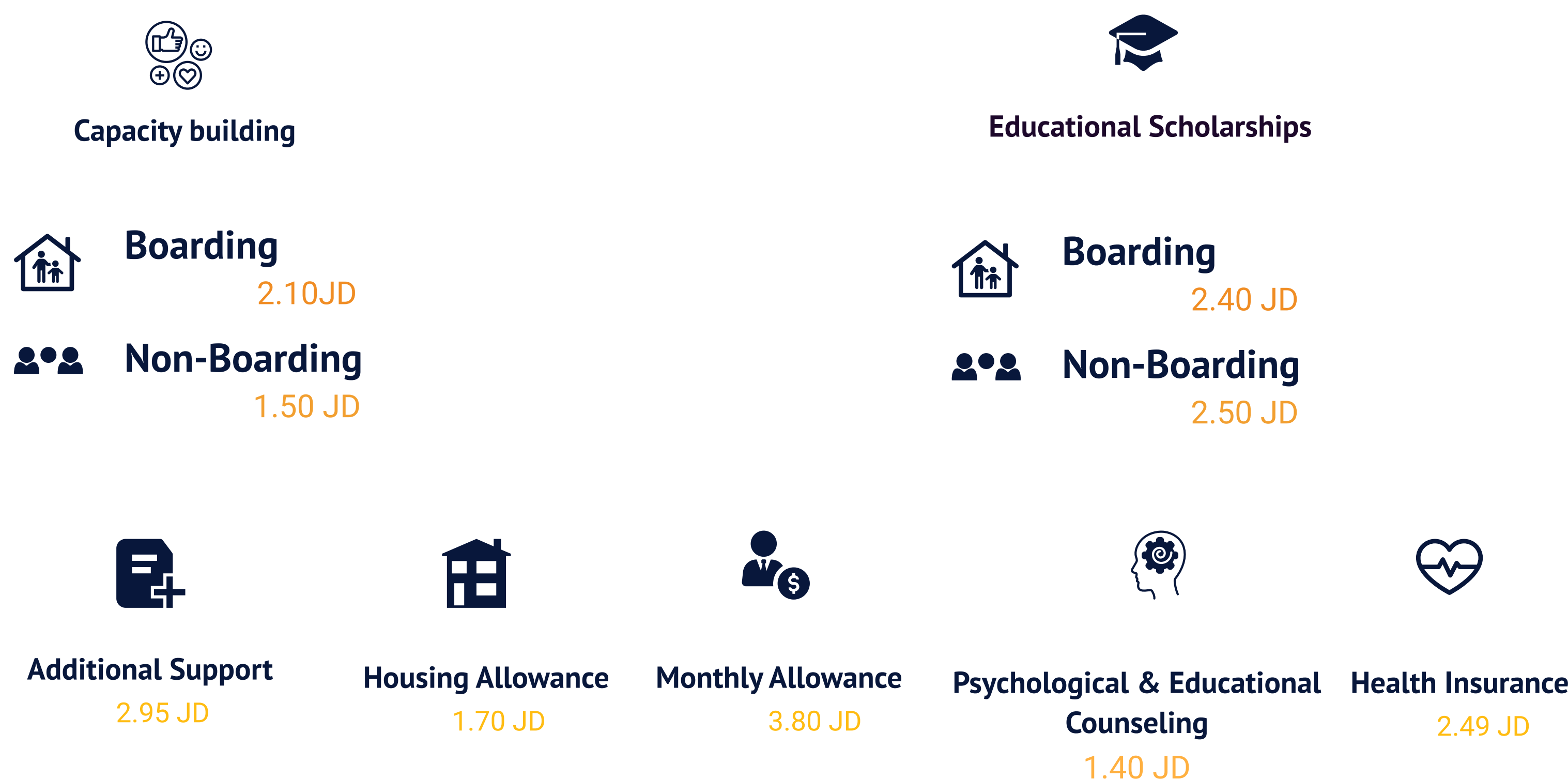
### Objective of the Research

### Research Tools

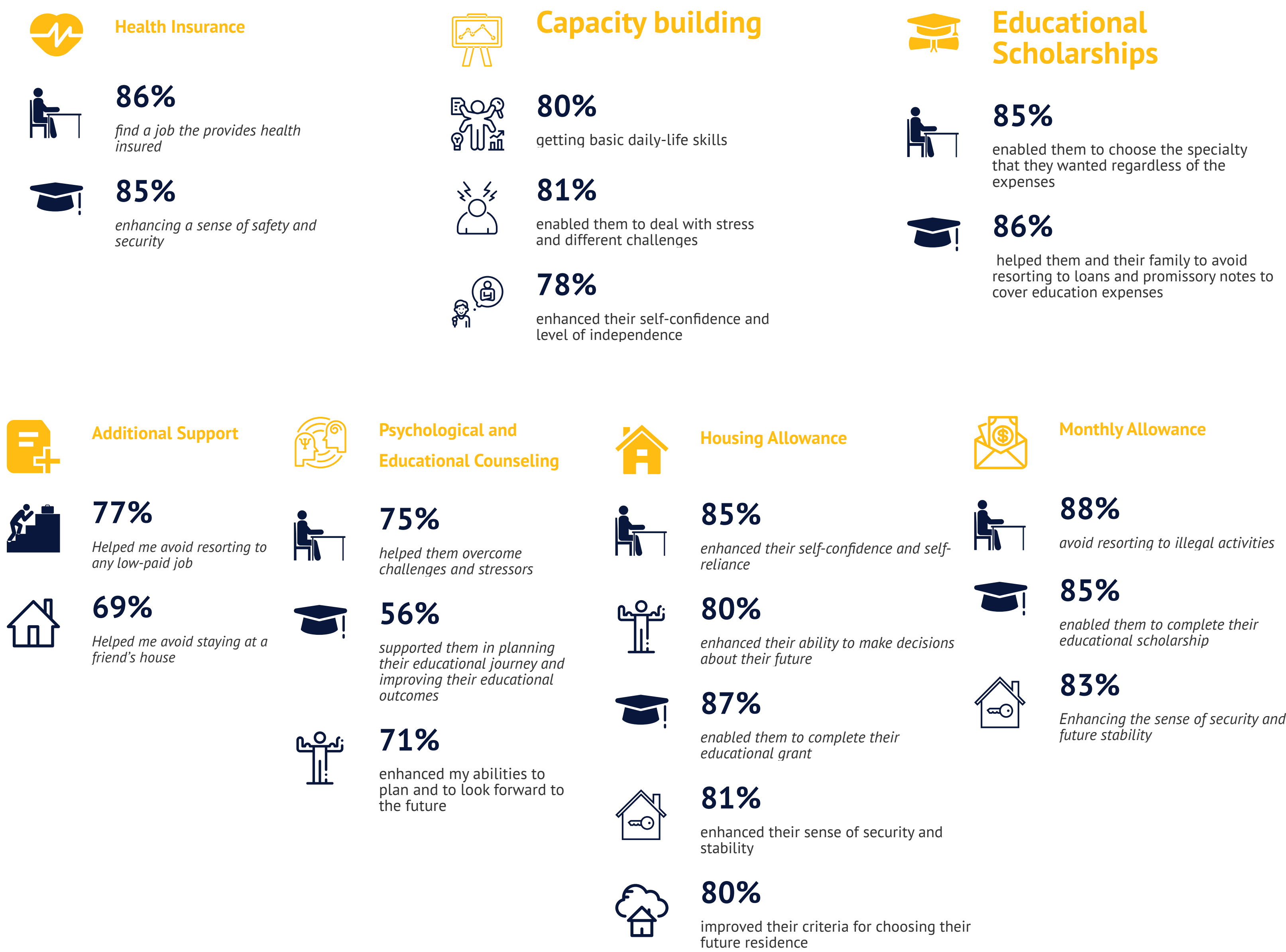
- Identifying the level of positive changes among the orphaned youth who benefited from AAF's Programs
- Bridging the gaps between the services provided and the actual needs of the youth
- Show AAF as a leader in promoting impact investment in the region, through assessing and measuring the impact of its programs on the main beneficiaries



### SROI Ration for Students (of all educational levels)and for each program



### The most impacts changes experienced by students as a result of benefiting from the different programs



### Future Plan:

<b>Educational scholarship Program</b>  It is recommended to provide students with close guidance throughout the process of choosing their majors, focusing on subjects that are aligned with the market needs. This will not only enhance their opportunities to find a proper job, but it will also affect their living standards	<b>Capacity building Program</b>  Re-activating the training program for non-boarding students Reconstructing a clear training program based on the basic needs of students and in which opportunities are distributed equally and according to the needs	<b>Additional Support</b>  All indicators show the effectiveness of the presented program and the importance of sustaining it, but the effectiveness of the program can be re-evaluated later for each educational level, especially for the vocational training program, as it lasts for less than one year. This is important as most diploma tried to join another opportunity by joining the university in order to increase the duration of support, but this option may be difficult and not available to vocational students.
---	--	--

<b>Housing</b>  Re-evaluate the criteria for selecting the location of accommodation for boarding students to ensure that the proximity to the educational institution, and reduce the transportation cost incurred by students	<b>Health insurance</b>  It is recommended to hold a more detailed documentation and follow-up on the nature and number of students' visits to the health care centers in order to enhance and develop the program based on their needs	<b>Academic and psychosocial counselling</b>  There is a clear need to create an informational partnership between AAF and orphanage centers, in which confidentiality and data privacy are considered to design a comprehensive psychosocial and academic counseling program for students. This is needed as counseling services should be provided by specialists to further meet their needs and enhance their skills.	<b>Monthly allowance</b>  Re-evaluate the amount of monthly allowance allocated to students and to ensure that it is proportionate with the cost of living and inflation rates to ensure that it meets the basic needs of students
---	---	---	--